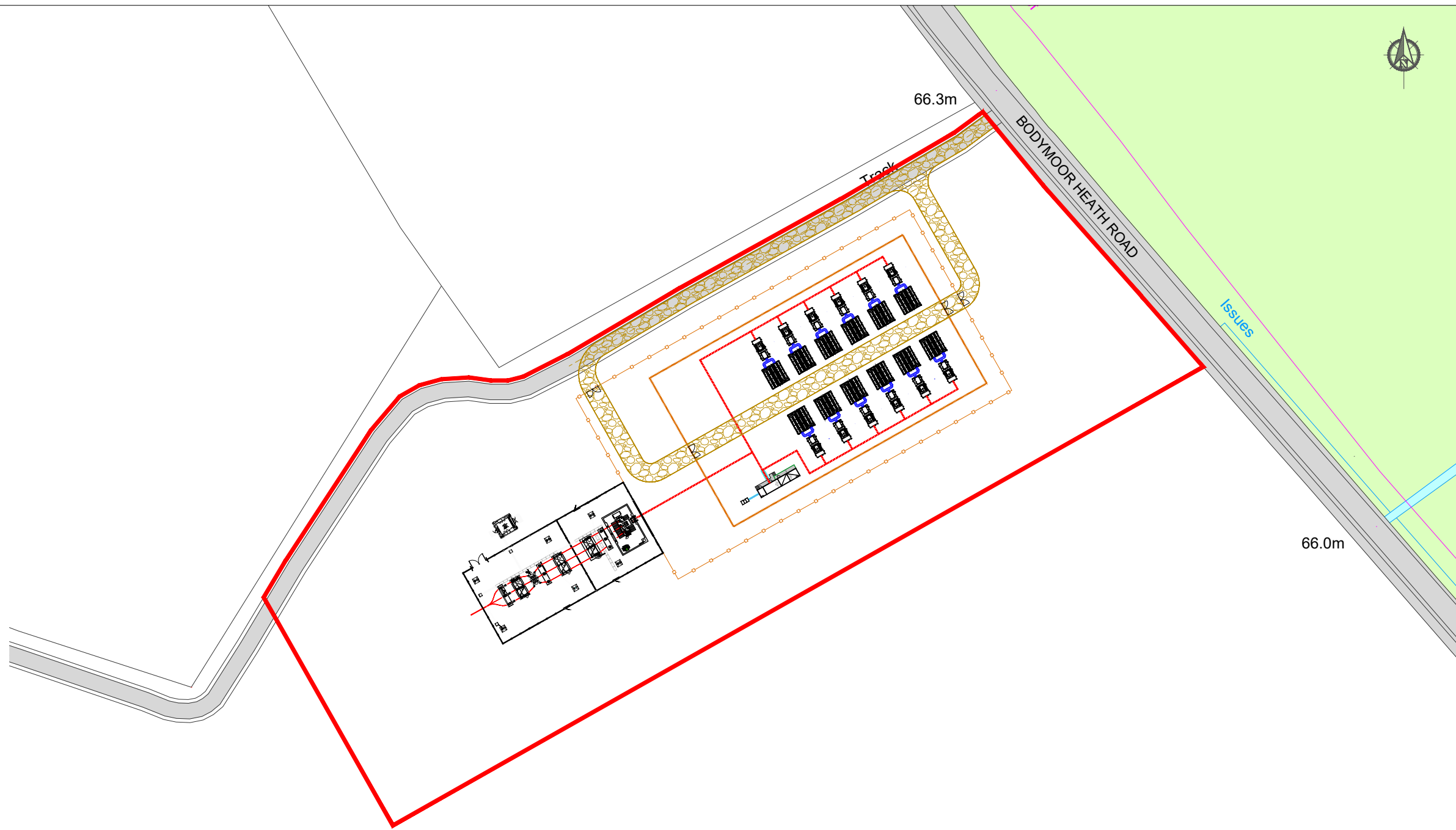


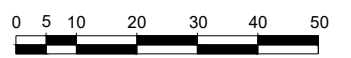
LEGEND	
	SITE BOUNDARY
	SECURITY FENCE
	4m ACOUSTIC FENCE
	ACCESS ROUTE
	HV CABLE ROUTE - TRENCH
	DC CABLE ROUTE - TRAY (BESS)
	CUSTOMER SUBSTATION
	MV CONTAINER - TITAN 2
	2h BATTERY CONTAINER - TITAN 2
	AUXILIARY TRANSFORMER
	132kV SUBSTATION
	GATES

PROJECT NAME: BODYMOOR HEATH	
SITE AREA:	5.32 acres / 2.15 ha
BATTERY CONFIGURATION	
1 BLOCK CONTAINS:	
1 x MVS5000UD-LV MV STATION COMPRISING OF	
- 1 x 5000kVA 0.69kV/33kV TRANSFORMER	
- 1 x 36kV RMU	
2 x ST5015UX (5015kWh) BATTERY CONTAINERS	
COMPRISING OF	
- 1 x 5015kWh LFP BATTERIES	
- 12 x SC210HX (210kVA) PCS	
TOTAL BLOCK:	12
INSTALLED BATTERY CAPACITY:	120.36MWh
USABLE BATTERY CAPACITY (EXCLUDING AUX.):	108.876MWh
POWER GENERATING FACILITY APPARENT POWER RATING:	60.48MVA
POWER GENERATING FACILITY REGISTERED CAPACITY:	56.82MW
POWER GENERATING FACILITY C-RATE:	0.5C
SITE RATED POWER OUTPUT @POC:	50MW



Jez McHale (Jul 5, 2024 11:29 GMT+1)

Jasmine Hewitt (Jul 4, 2024 17:32 GMT+1)



Installer Details  
 Anesco Ltd.  
 The Green,  
 Easter Park,  
 Benyon Road,  
 Reading,  
 RG7 2PQ  
 Tel: 0845 894 4444

Comments  
**Not For Construction**

Revision	Description	Revised By	Date	Drawn By
A	Redesigned using Sungrow solution	JS	24/11/2022	MS
B	Updated with Titan 2	RD	11/12/2023	
C	Design updated	GM	19/06/2024	
D	RLB reduced	GM	28/06/2024	
				Scale 1:1250
				Sheet Size A3

Installation Address  
 Land at Bodymoor Heath Lane,  
 Lea Marston CP,  
 Marston,  
 Warwickshire,  
 B76 0DZ

Project  
 LAND AT BODYMOOR HEATH ROAD

Title  
 SITE LAYOUT

Drawing No.  
 C0002468\_02

Rev.  
 D

